



## 48 Russell Road

Salisbury, SP2 7LR

£229,950



A modern two bedroom end of terrace house located in a popular area within easy reach of good facilities. The house has double glazing and electric central heating. There is a private parking space to the front and an easy to manage garden to the rear. The property is located just off the Devizes Road within easy reach of local shops, a primary school, the main line railway station and the city centre.



## Directions

From the Wilton Road roundabout proceed out on the A360 Deves Road for quarter of a mile, turn left into Bedford Road, right into Russell Road and then second right into the close. You will see number 48 in the corner.

## Reception Hall

Meter cupboard.

## Living Room 13'8" x 13'5" (4.18m x 4.10m)

Newlec radiator, door to garden, stairs to first floor.

## Kitchen 9'11" x 7'10" (3.03m x 2.4m)

Single drainer sink unit, plumbing for washing machine, electric cooker, range of base and wall cupboards, larder cupboard, shelving.

## Landing

Access to loft with hot water tank. Storage cupboard.

## Bedroom One 10'8" x 10'5" (3.26m x 3.18m)

Wardrobe, storage recess, electric radiator.

## Bedroom Two 10'7" x 7'1" (3.23m x 2.18m)

Electric radiator.

## Bathroom

Panelled bath with Triton shower, washbasin, WC, part tiled walls. Wall mounted heater.

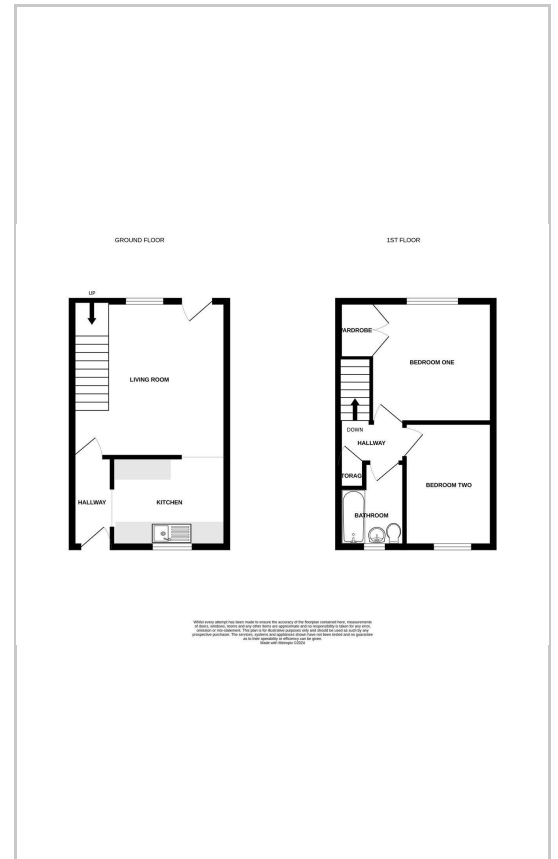
## Outside

Parking space to the front. Side pedestrian access to rear garden. Mainly paved with some shrubs.

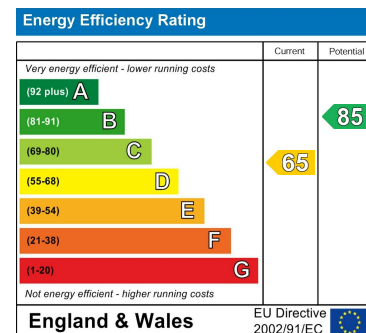
## Area Map



## Floor Plans



## Energy Efficiency Graph



These particulars, whilst believed to be accurate are set out as a general outline only for guidance and do not constitute any part of an offer or contract. Intending purchasers should not rely on them as statements of representation of fact, but must satisfy themselves by inspection or otherwise as to their accuracy. No person in this firm's employment has the authority to make or give any representation or warranty in respect of the property.